

# AP<sup>®</sup> Instructional Planning Report (2013)

✓ Data Updated Aug 26, 2013, Report Run Jul 17, 2014

This subject-specific report compares your students' performance on specific topics in this AP Exam with the performance of all students on these same topics, helping teachers target areas for increased attention and focus in the curriculum. Other uses of the report, such as teacher evaluation or institutional ranking, are not warranted. Students who tested on late-testing dates are not included in this report.

## Interpreting this report

### Page 2

The charts on page 2 compare your students with the global population on the multiple-choice and free-response sections of this exam. The total population of students who took this exam (global group) is evenly divided into fourths, based on their performance on the section. **These fourths do NOT correspond with the final AP score of 1, 2, 3, 4 or 5.** The percentages of your students that fall into each fourth are represented by the blue bars. For example, the right-most blue bar shows the percentage of your students who fall into the highest fourth. If your students' score distribution is comparable to the global population, then your students will group evenly (approximately) across the fourths. Grouping of your students in the higher fourths indicates higher performance than the total population; grouping of students in the lower fourths indicates performance below the total population.

### Page 3

On page 3, the following columns appear in each table: Number of Questions (Multiple Choice table only), Max Possible (Free Response table only), Global Mean and Group Mean. The Global Mean column provides all AP students' average scores on specific content areas; the Group Mean column provides this information for your students. The right side of each table, Number of Students in Group, shows the number of your students that fell into the fourths. Fourth's are derived from dividing the total student population equally into four parts based on their performance in each content area. The numbers in the Number of Questions column for the multiple-choice content areas are simply the maximum possible scores. Beginning in 2011, no points will be deducted for incorrect answers to multiple-choice questions. The mean score for the content areas will be the average number of multiple choice questions answered correctly.

Some AP Exams have free-response questions that allow students to choose between topics; mean scores are not provided for those questions/problems of the exam. This is because the populations of AP students choosing each question when choice is permitted can be quite different.



# AP<sup>®</sup> Instructional Planning Report (2013)

✓ Data Updated Aug 26, 2013, Report Run Jul 17, 2014

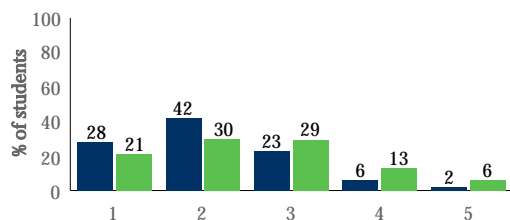
This subject-specific report compares your students' performance on specific topics in this AP Exam with the performance of all students on these same topics, helping teachers target areas for increased attention and focus in the curriculum. Other uses of the report, such as teacher evaluation or institutional ranking, are not warranted. Students who tested on late-testing dates are not included in this report.

## West Seattle High School (481165) - World History

■ **Your Group** Total Students: 53

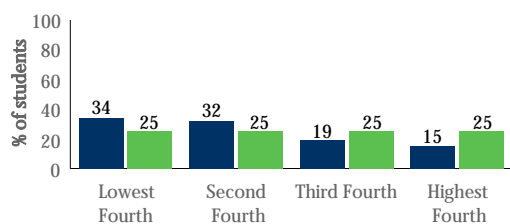
■ **Global** Total Students: 218,940

### Overall Score Distributions



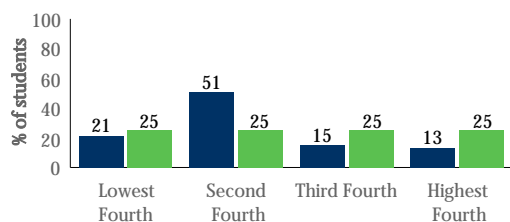
Overall Score Distributions	1	2	3	4	5
Number of Students in Your Group	15	22	12	3	1
% Students in Your Group	28.3	41.5	22.6	5.7	1.9
% Students Globally	21.2	30.4	29.3	13.3	5.7

### Multiple-Choice Section



Multiple-Choice Section	Lowest Fourth	Second Fourth	Third Fourth	Highest Fourth
Number of Students in Your Group	18	17	10	8
% Students in Your Group	34.0	32.1	18.9	15.1
% Students Globally	25.0	25.0	25.0	25.0

### Free-Response Section



Free-Response Section	Lowest Fourth	Second Fourth	Third Fourth	Highest Fourth
Number of Students in Your Group	11	27	8	7
% Students in Your Group	20.8	50.9	15.1	13.2
% Students Globally	25.0	25.0	25.0	25.0



# AP<sup>®</sup> Instructional Planning Report (2013)

✓ Data Updated Aug 26, 2013, Report Run Jul 17, 2014

## West Seattle High School (481165) - World History

### Performance on Multiple-Choice Section (Maximum Possible Score = 60)

Content Area	Number of Questions	Global Mean	Group Mean	Number of Students in Your Group			
				Lowest Fourth	Second Fourth	Third Fourth	Highest Fourth
ARGUMENT/EVIDENCE/INTERP-TEXT BASED	20	12	11	11	25	3	14
ARGUMENT/EVIDENCE/INTERP-VISUAL BASED	10	6	6	17	8	16	12
CHRONOLOGICAL PERIOD 3	13	7	6	11	17	18	7
CHRONOLOGICAL PERIOD 4	13	7	6	7	19	15	12
CHRONOLOGICAL PERIOD 5	18	11	10	15	16	10	12
CHRONOLOGICAL PERIOD 6	16	8	7	17	18	7	11
CHRONOLOGICAL PERIODS 1 AND 2	15	9	8	19	9	13	12
CHRONOLOGICAL REASONING	29	16	14	15	17	14	7
COMPARISON AND CONTEXTUALIZATION	16	9	7	18	20	5	10
<b>Multiple-Choice Summary</b>		<b>34</b>	<b>30</b>	<b>18</b>	<b>17</b>	<b>10</b>	<b>8</b>

### Performance on Free-Response Section (Maximum Possible Score = 60)

Question/Problem	Max Possible Score	Global Mean	Group Mean	Number of Students in Your Group			
				Lowest Fourth	Second Fourth	Third Fourth	Highest Fourth
REGIONAL ISSUES+GLOBAL POWERSTRUGGLES18C	9	2.1	1.6	0	28	18	7
POLITICS:CONT+CHANGES IN MED CULTURES	9	1.0	0.7	##	##	##	##
STATE ROLE IN ECON DEV:COMP JAPAN W/1OF3	9	1.4	1.1	0	26	11	16
<b>Free-Response Summary</b>		<b>10.1</b>	<b>7.5</b>	<b>11</b>	<b>27</b>	<b>8</b>	<b>7</b>

## Indicates that the distribution is not displayed because more than half of the total AP global group earned the same score.

\*\* Indicates that the distribution is not displayed because there were fewer than five questions in the category.

